



**Rosecroft**  
**Primary and Nursery School**



**Attleborough and Rosecroft Primary  
Federation:**

**Achieve, Collaborate, Flourish**

Friday 14<sup>th</sup> February 2025

Newsletter 8

Dear Parents and Carers,

We hope you enjoyed meeting with your child's teacher this week. It was nice being able to welcome parents and carers into classrooms and we look forward to inviting parents and carers into school more often moving forward.

Thank you to FORPS for the brilliant organisation of our recent school discos. Events like these take a huge amount of planning and preparation, but it all came together on the night. The children had a great time – thank you to everyone involved. Please keep an eye for further FORPS events as they have a lot planned!

Every year we send out surveys to staff, pupils and parents to seek everyone's views on different aspects. We want to know what you think is working well and what you think could be better. Last year parents said that they wanted a bigger choice of clubs and extra-curricular activities. The impact of this was that we brought in outside providers such as cookies kitchen and creation station as well as our music teachers, drama club and Premier Sports. We also greatly increased our school (and free!) offer to include dodgeball, German, mindfulness, board games, cool maths, sign language, recorders, and sewing clubs as well as our after school multi sports clubs.

Our pupil survey told us that we did not give as much attention to keeping ourselves well mentally as we do physically. We thought we did, but we have now introduced our termly wellbeing days and other mental health and wellbeing initiatives in addition to what is already in the curriculum to firmly put the importance of good mental health firmly on everyone's agenda. Please also read the section below about all our other exciting plans that include spending more time outdoors, including our new wellbeing garden. 😊

Our school council raised that we needed more litter bins to help keep our school site looking neat and tidy – so more bins were ordered and placed around the playgrounds.

Please do take the time to complete the survey, we do listen and we do want to make sure our school is the best it can be, for all members of our school community – many thanks in advance! Following the link makes it easier for us to analyse the data however we also hold paper copies in the office should you need one. <https://forms.office.com/e/akMJfaMNGz> Please could you complete this by Friday 7<sup>th</sup> March 2025.

Best wishes for a lovely half term break.

Mrs Jackie Drew

Acting Headteacher

### Exciting school improvements!

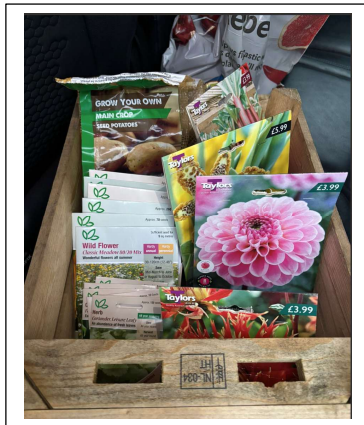
After half term we are looking forward to the installation of our new outdoor gym equipment on the school field which will offer a different kind of physical activity to our existing climbing frames and trim trails.

Reception have taken delivery of some outdoor growing beds and have been preparing them ready for the growing season and are excited to watch the little seedlings grow into bigger things!

KS2 have all the materials they need to create an allotment and are looking forward to getting this up and running for staff and pupils to enjoy.

You may have noticed the area at the front of our school that has been returfed. This is being turned into a wellbeing garden area with planters, seating, a teepee and a den. We are looking to plant it up with herbs and plants that will also add a sensory element through touch and smell.

Thank you to Peter Beales for their kind donation towards our growing gardens – we look forward to it all coming to fruition! 😊



### Rosecroft Primary are now cashless!

We are now cashless and cannot accept cash for dinners, trips, etc. The only exception is for events the Friends are holding such as secret shopping and discos. Dinner money needs to be paid in advance, ideally for the week ahead. Thank you.

Thank you to everyone who participated in last week's NSPCC Numbers Day – together we raised £127.72! 😊



**Attendance last week:**

Reception	Year 1	Year 2	Year 3	Year 4	Year 5	Year 6
<b>Seacole Class</b> 93.31%	<b>Pankhurst Class</b> 95%	<b>Anning Class</b> 93.33%	<b>Cavell Class</b> 92.86%	<b>Ali Class</b> 99%	<b>Johnson Class</b> 95.38%	<b>Keller Class</b> 91.15%
<b>Benjamin Class</b> 91.86%	<b>Potter Class</b> 96.21%	<b>Jemison Class</b> 94.33%	<b>Parks Class</b> 96.09%	<b>Frank Class</b> 95.48%	<b>Tubman Class</b> 89.62%	<b>Goodall Class</b> 100%
			<b>Rashford Class</b> 94.78%		<b>Hamilton Class</b> 92.59%	<b>Bronte Class</b> 95.42%

Our whole school target is 95.5%

Well done to Goodall Class for achieving 100% attendance this week. 😊

**Important diary dates:**

17-21.02.25 Half term  
24.02.25 School re-opens after half term  
24.02.25 Y3 Norwich Castle trip  
03-07.03.25 Y6 Bawdsey Manor trip  
11.03.25 Y2 Ancient House Museum Trip  
12.03.25 Y4 Norwich Cathedral Trip  
W/c 24.03.25 Nursery Superwomen secret shopping  
27.03.25 & 28.03.25 Main school Superwomen secret shopping  
07-22.04.25 Easter Holiday  
23.04.25 School re-opens after Easter holiday  
29.04.25 Vancols photographers – Class photographs  
01-02.05.25 Y2 Hautbois Residential trip  
05.05.25 School closed for bank holiday Monday  
26-30.05.25 Half Term  
02.05.25 School re-opens after half term

Flyers attached to this newsletter:

- Attleborough Chambers Community Café
- 

Please scan the QR code for lots of information relating to SEND. This is updated regularly.



You can also click on the link below if you are unable to Scan the QR code.

<https://padlet.com/rallum2/rosecroft-primary-school->

This term's house points to date:

Red House	Yellow House	Blue House	Green House
2334	2050	1995	2303

Congratulations to Red House for being this half term's winners and who can look forward to a house treat after half term. 😊

### Safeguarding

If you have any concerns for the safety or welfare of a child at any time, but particularly during the holidays, please share your concern by calling either of the following numbers:

NSPCC – 0808 800 5000

Child Advice and Duty Service: 0344 800 8020

Also [safeguarding@rosecroft.school](mailto:safeguarding@rosecroft.school)

Calls can be anonymous